

INNOVATION LEADS TO VALUE



SWE 400F LARGE EXCAVATOR

◆ Total weight: 39.2t

◆ Engine power: 254kW/2100rpm

◆ Bucket capacity: 2.0m³



- ◆ **Powered by Cummins for strong performance**
The 254 kW high-power reserve engine delivers robust power; the 249 kN bucket digging force easily handles heavy-load conditions.
- ◆ **New Design, Mighty and Dominant**
The new generation family-style F series features a brand new appearance, with a majestic and powerful overall design, incorporating more mining elements, combining beauty and strength.
- ◆ **Efficiency First, High Efficiency and Energy Saving**
A large-displacement pump, large-passage main valve, equipped with an independent cooling system; a 2.8 m arm is paired with a 2.0 m³ large bucket capacity dual-curve rock bucket, and the crushing system is matched with a 175 efficient energy-saving breaker.
- ◆ **Reliable and Durable, Diamond Quality**
Heavy-duty working devices with large box section, supported by 40-ton grade forged components; 40-50 ton class extended and widened undercarriage assembly, the reliable and durable carrying capacity is multiplied by the four wheels and the track link.
- ◆ **Comfortable Control and Easy Maintenance**
The all-new cab with a 10.1-inch large touch LCD display, one-touch start and centralized full-key switch; the direct-flow air filter makes maintenance more convenient.

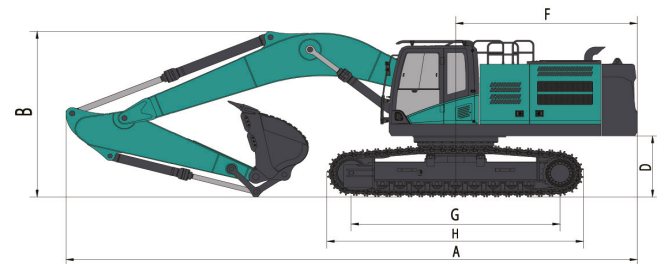
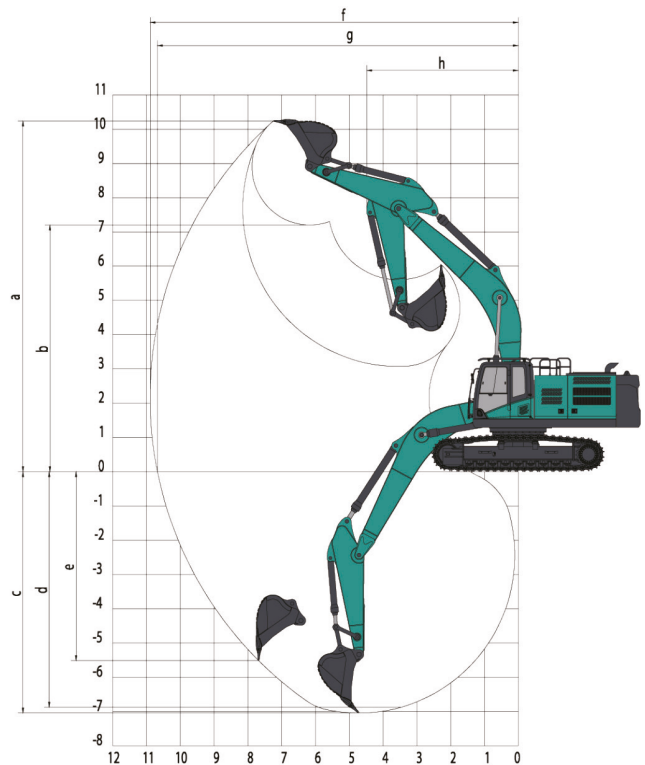
TECHNICAL PARAMETERS



SWE 400F

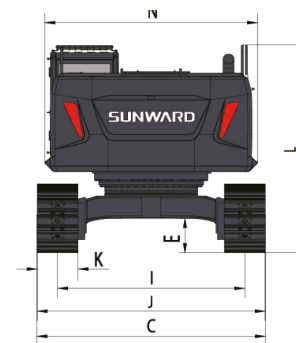
Parameters and performance of the main machine

Working weight	kg	39200	
Standard bucket capacity	m ³	2.0	
Bucket digging force	kN	249	
Arm digging force	kN	207	
Max. drawbar pull	kN	348	
Travel speed (Max/Min)	km/h	5.2/3.0	
Gradeability	%	70	
Ground pressure	kPa	69.6	
Swing speed	rpm	9.6	
Engine	Brand	Cummins	
	Model	L9S5-C338	
	Power	kW/rpm	254/2100
	Max Torque	N.m/rpm	1526/1400
	Displacement	L	8.9
Fuel tank capacity	L	700	
Hydraulic Oil Tank	L	475	
Main Pump	Brand	Hengli	
	Model	V90N180	
	Type	Variable plunger pump	
	Max Flow	L/min	2x306
	Working Pressure	MPa	34.3
Pilot pump	Type	Gear pump	
	Max Flow	L/min	25.5
	Working Pressure	MPa	3.9
AUX-1 pipe flow (breaker)	L/min	306	
AUX-2 pipe flow	L/min	36	



Working range

	Boom length	mm	6500
	Arm length	mm	2800
a	Max. cutting height	mm	10375
b	Max. loading height	mm	7175
c	Max. digging depth	mm	7020
d	Digging depth (2.44m; horizontal)	mm	6855
e	Max. vertical digging depth	mm	5500
f	Max. digging reach	mm	10925
g	Max. digging reach at ground level	mm	10705
h	Min. front slewing radius	mm	4510



Outline dimensions

A	Total length	mm	11400	H	Total track length	mm	5115
B	Total height	mm	3630	I	Shoe distance	mm	2740
C	Total width	mm	3350	J	Track width	mm	3340
D	Counterweight Clearance	mm	1300	K	Shoe Width	mm	600
E	Chasis ground clearance	mm	550	L	Max height of total machine	mm	3330
F	Tail swing radius	mm	3615	N	Swing width		3120
G	Track length on the ground	mm	4160				

♦ The above parameters may be different due to product upgrading.

