

INNOVATION LEADS TO VALUE



# SWE 335F LARGE EXCAVATOR

◆ Total weight: 33.6t

◆ Engine power: 209kW/2000rpm

◆ Bucket capacity: 1.7m<sup>3</sup>

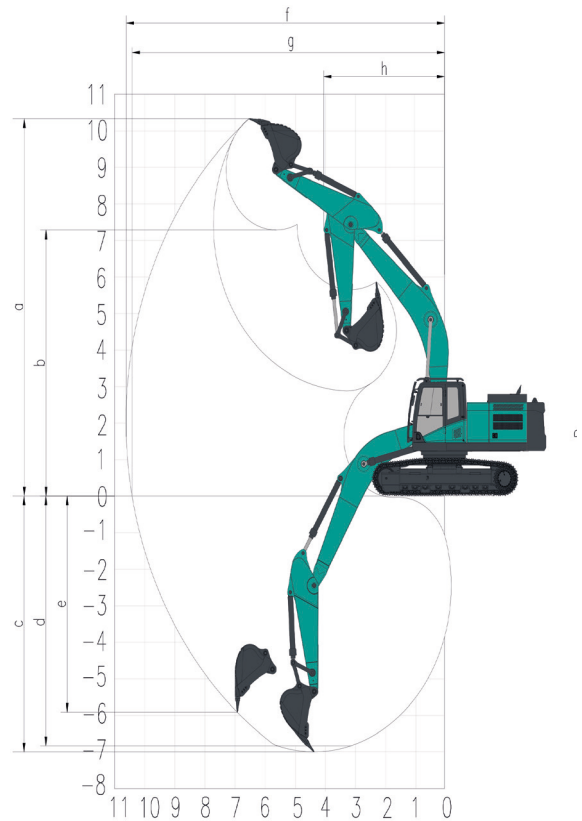


- ◆ The new appearance of the new generation of F series family could create a magnificent style of the whole machine. More mining elements are added to modeling design to show its beauty and power at the same time.
- ◆ The machine is equipped with a powerful 209kW Cummins engine. High efficiency and energy saving hydraulic system is used, and the bucket digging force could reach 214KN, which can be easily handled in heavy-duty working conditions.
- ◆ High-efficiency, large-displacement hydraulic system is used, and 2.9m short bucket bar and 1.7m<sup>3</sup> double-curve reinforced bucket are provided to realize the perfect proportion of the working device according to the working conditions.
- ◆ Heavy load working device with 36t class die forging support. The lower vehicle assembly is installed with 36t class chassis system, and the four wheels and one belt are reliable and durable, with excellent carrying capacity.



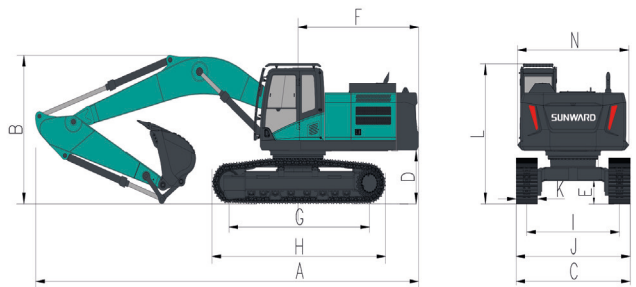
## Parameters and performance of the main machine

Weight of whole machine		kg	33600
Standard bucket capacity		m³	1.7
Bucket digging force		kN	214
Arm digging force		kN	165
Max. drawbar pull		kN	297
Travel speed (Max/Min)		km/h	5.8/4
Gradeability		%	70
Ground pressure		kPa	63.8
Swing speed		rpm	9
Engine	Brand		Cummins
	Model		B6.7-129-SV
	Power	kW/rpm	209/2000
	Max torque	N.m/rpm	1280/1500
	Displacement	L	6.7
Fuel tank capacity		L	600
Hydraulic oil tank capacity		L	400



## Working range

	Boom length	mm	6150
	Arm length	mm	2900
a	Max. digging height	mm	10330
b	Max. dumping height	mm	7280
c	Max. digging depth	mm	7010
d	Digging depth (2.44m; horizontal)	mm	6840
e	Max. vertical digging depth	mm	5920
f	Max. digging reach	mm	10570
g	Max. digging reach at ground level	mm	10370
h	Min. front slewing radius	mm	4005



## Outline dimensions

A	Total length	mm	10866	H	Total track length	mm	4860
B	Total height	mm	3600	I	Track distance	mm	2590
C	Total width	mm	3190	J	Track width	mm	3190
D	Counterweight Clearance	mm	1235	K	Track shoe width	mm	600
E	Chassis ground clearance	mm	530	L	Max. height of cab	mm	3600
F	Platform tail slewing radius	mm	3520	N	Upper-carriage width		3110
G	Length to center of rollers	mm	3930				

◆ The above parameters may be different due to product upgrading.

