

INNOVATION LEADS TO VALUE



# SWE 240FED MEDIUM EXCAVATOR

◆ Total weight: 24.0t

◆ Engine power: 120kW/2000rpm

◆ Bucket capacity: 1.0m<sup>3</sup>

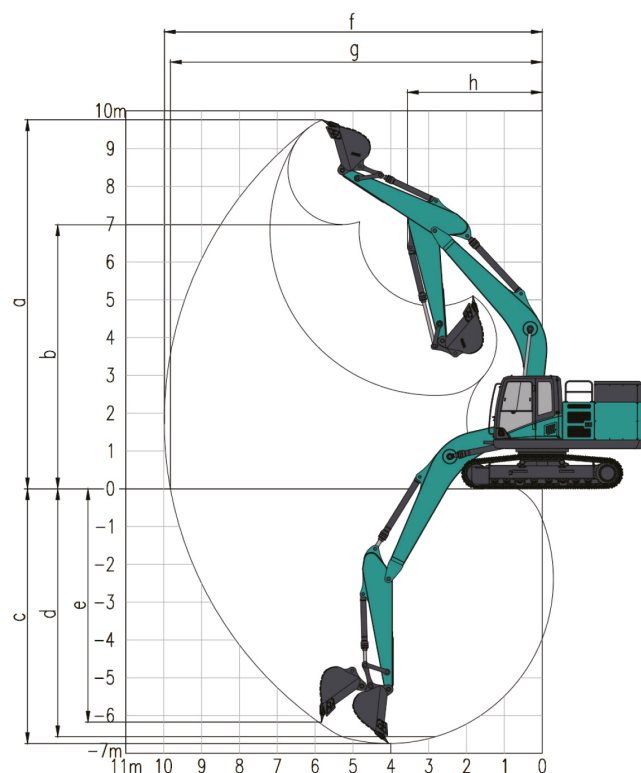


- ◆ Advanced frequency conversion drive control technology, multi-bus and Ethernet communication technology and battery integrated management system control technology are used.
- ◆ The two-stage heating mode makes it possible to start the normal operation of the battery motor by heating even in extremely cold temperatures, which is more applicable to various environments.
- ◆ In the integrated heat dissipation mode, the hydraulic oil and motor are integrated, and the cabin air conditioning and battery heat dissipation are integrated, to adjust the heat dissipation energy and reduce energy consumption according to the ambient temperature automatically.
- ◆ Intelligent and unmanned operations can be realized by installing intelligent remote control devices, which reduces the danger and intensity of manpower for a wider range of applications.



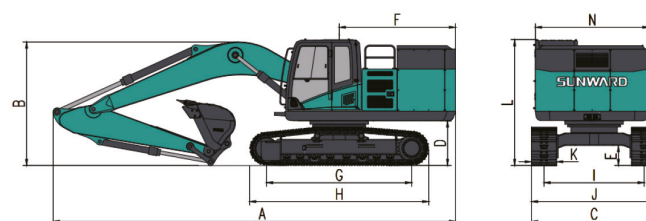
## Parameters and performance of the main machine

Working weight		kg	24000
Standard bucket capacity		m³	1
Bucket Digging Force		kN	155
Boom Digging Force		kN	110
Max. traction		kN	193
Max climbing angle		%	70
Ground Pressure		kPa	52.4
Travel Speed (Max/Min)		km/h	5.0/3.2
Slewing speed		rpm	11.8
Engine	Brand		/
	Model		/
	Power	kw/rpm	120/2000
	Max. torque	N.m/rpm	1170
	Displacement	L	/
Fuel tank capacity		L	/
Hydraulic oil tank capacity		L	300



## Working range

	Boom length	mm	5700
	Arm length	mm	2920
a	Max. digging height	mm	9740
b	Max. dumping height	mm	6980
c	Max. digging depth	mm	6750
d	Digging depth (2.44m; horizontal)	mm	6560
e	Max. vertical digging depth	mm	6175
f	Max. digging radius	mm	9945
g	Max. digging reach at ground level	mm	9820
h	Min. front slewing radius	mm	3560
i	Max. height of Dozer blade	mm	/
j	Max. digging reach of Dozer blade	mm	/



## Outline dimensions

A	Total length	mm	9575	H	Track length	mm	4260
B	Total height	mm	2980	I	Shoe distance	mm	2390
C	Total width	mm	2990	J	Track width	mm	2990
D	Counterweight Clearance	mm	1070	K	Shoe Width	mm	600
E	Chassis ground clearance	mm	480	L	Max. height of total machine	mm	2980
F	Tail slewing radius	mm	2996	N	Swing width	mm	2710
G	Track length on the ground	mm	3465				

◆ The above parameters may be different due to product upgrading.

